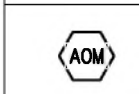

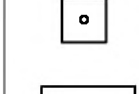
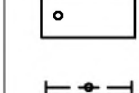
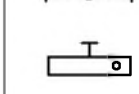


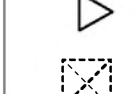



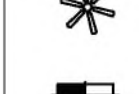

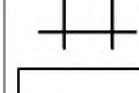
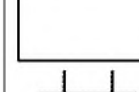



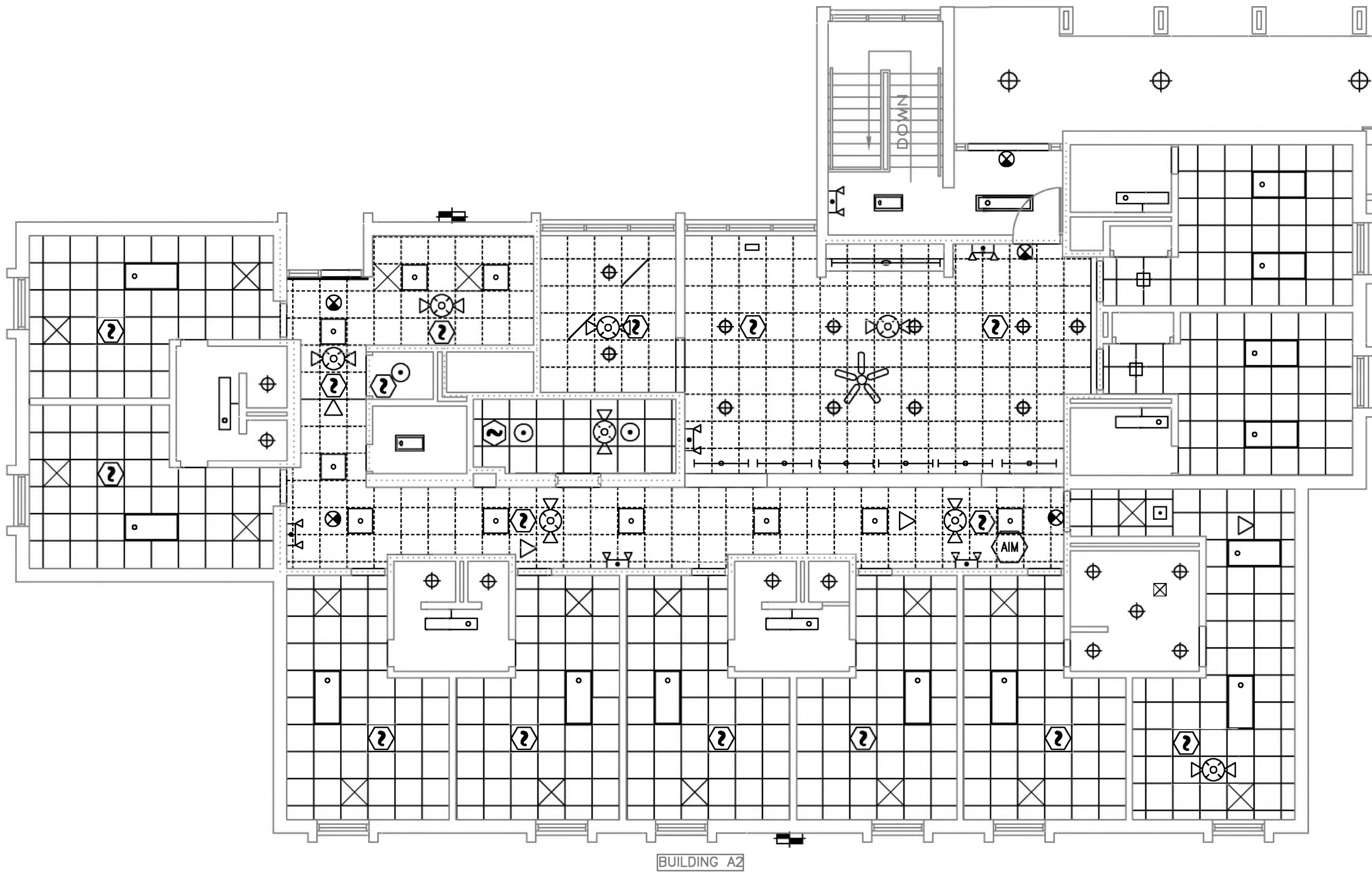


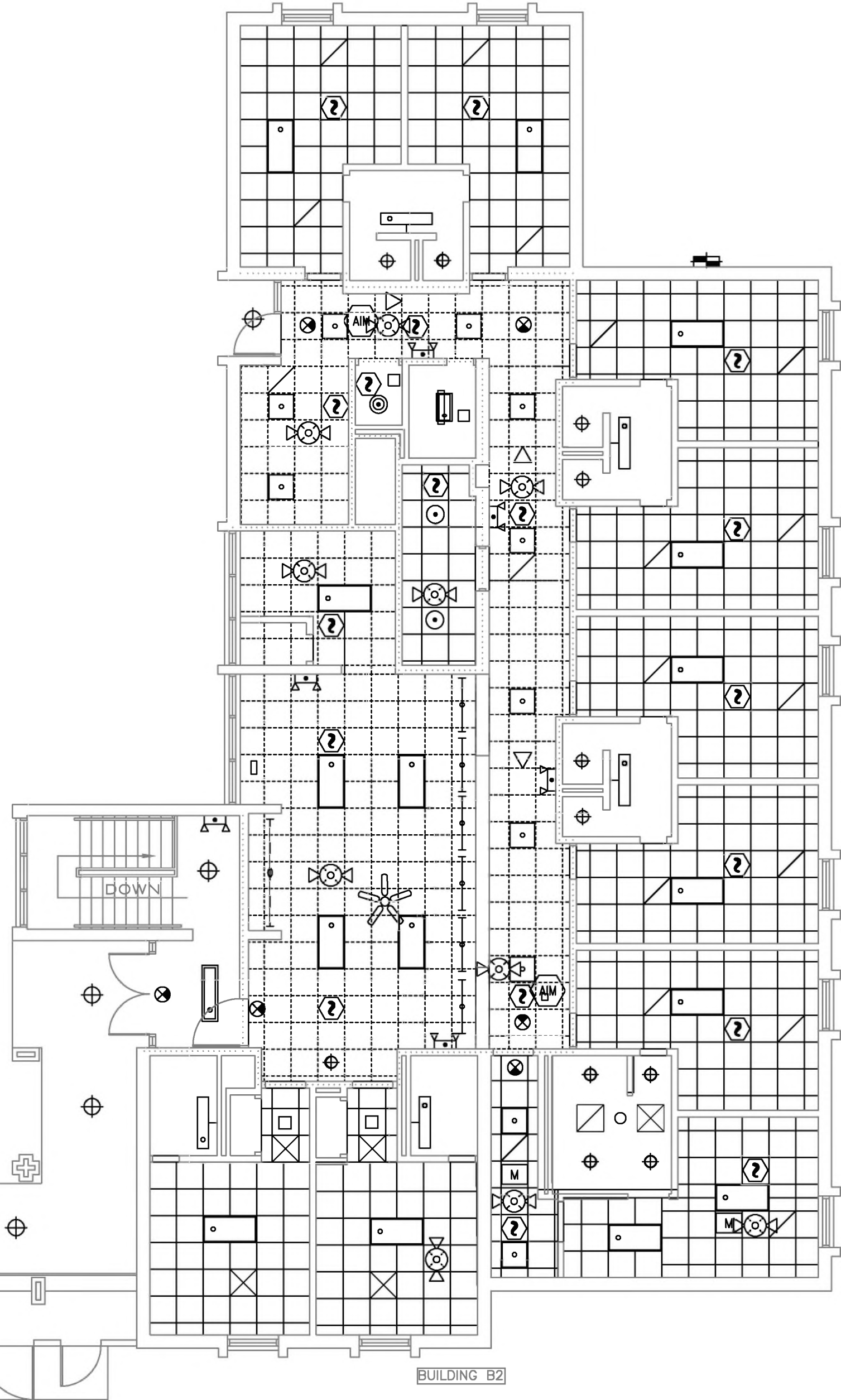
REFLECTED CEILING LEGEND

	ALARM OUTPUT MODULE
	RECESSED CAN
	24" X 24" FLOURECENT
	24" X 48" FLOURECENT
	12" X 48" CEILING MOUNTED FLOURESCENT
	WALL MOUNTED FLOURESCENT AT LAVATORY
	CEILING MOUNTED LIGHT
	CEILING MOUNTED FLOURESCENT
	COMM DEVICE
	24" X 24" MECH. RETURN AIR GRILLES - REFER TO MECH
	FIRE ALARM
	SMOKE DETECTOR
	CEILING MOUNTED EXIT SIGN
	CEILING FAN
	WALL MOUNTED EMERGENCY LIGHT
	24" X 24" ACOUSTICAL CEILING SYSTEM
	5/8" GYPSUM BOARD CEILING
	24" X 24" 1 HR RATED ACOUSTICAL CEILING SYSTEM



1 BUILDING A2 - REFLECTIVE CEILING PLAN
A-101 SCALE: 1'8" = 1'=0"

2 BUILDING B2 - REFLECTIVE CEILING PLAN
A-101 SCALE: 1'8" = 1'=0"



SHEET NOTES:

1. NEW GRID SYSTEM IN CORRIDOR AND COMMON AREA ENCLOSURE TO BE 1 HR RATED SEE SPECIFICATIONS AND DETAIL ON SHEET G-500.
2. CONTRACTOR TO CUT AND PATCH GYPSUM CEILINGS TO ALLOW FOR INSTALLATION OF SPRINKLER HEADS.
3. ALL GYPSUM CEILINGS TO RECEIVE PRIMER AND NEW PAINT PER SPECIFICATIONS.
4. CEILING GRIDS SHALL BE ORIENTED WITHIN SPACES SHOWN, U.N.O. FULL TILE (FT) WHERE INDICATED, SHALL ABUT DESIGNATED WALL. LIMIT PARTIAL PANELS TO NO LESS THAN 6"
5. DEVICES HAVE BEEN SHOWN FOR COORDINATION PURPOSES. ALL DEVICES MAY NOT BE SHOWN.
6. THE CONTRACTOR SHALL ENSURE THE INSTALLATION OF ALL DEVICES INDICATED ON THE ENGR. DWG. SEE MECHANICAL, ELECTRICAL, PLUMBING AND FIRE PROTECTION DRAWINGS OR ITEMS NOT SHOWN ON REFLECTIVE CEILING PLANS. CONTACT THE ARCHITECT IF ANY CONFLICT OCCURS.
7. CONTRACTOR TO PROVIDE THE LIGHT FIXTURE PROTECTION PER THE 1-HR RATED UL DETAIL REQUIREMENTS. SEE SHEET G-501.

REVISIONS				

ATLANTEC
ENGINEERS, PA
3221 BLUE RIDGE ROAD, SUITE 113
RALEIGH, NC 27612
(919) 571-1111

R RAYMOND
316 WEST MILLBROOK ROAD, SUITE 201
RALEIGH, NORTH CAROLINA
OFFICE: (919) 872-7866
WWW.RAYMONDGLOBAL.COM
LICENSE #53143 COAF C4282

PREPARED FOR:
NC DEPARTMENT
OF INSTRUCTION
SCO #
24-27792-01A

GOVERNOR MOREHEAD SCHOOL
SPRINKLER, ADA TOILET, LIGHTING
UPGRADES FOR DORMS A, B, & D
RALEIGH, NC

CONTENTS:
REFLECTIVE
CEILING DEMO
PLAN - 1ST FLS.
BDGS A & B

DATE:
05/27/2025
FOR
CONSTRUCTION
DESIGNER:
ENGINEER:

SHEET NO.
A-101
OF

